

DRAWING NO. 19

3 Storey Property  
 GF - Commercial  
 FF - 2 x SC Flattlets  
 SF - 2 x SC Flattlets

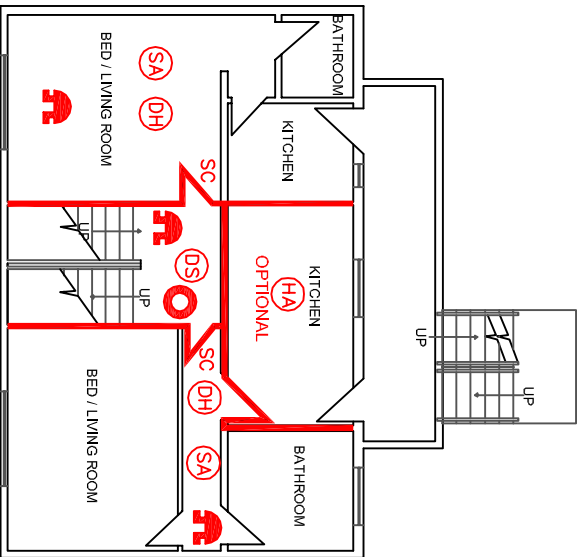
January 2009

Provide 60 min fire resisting separation to commercial premises including stairway

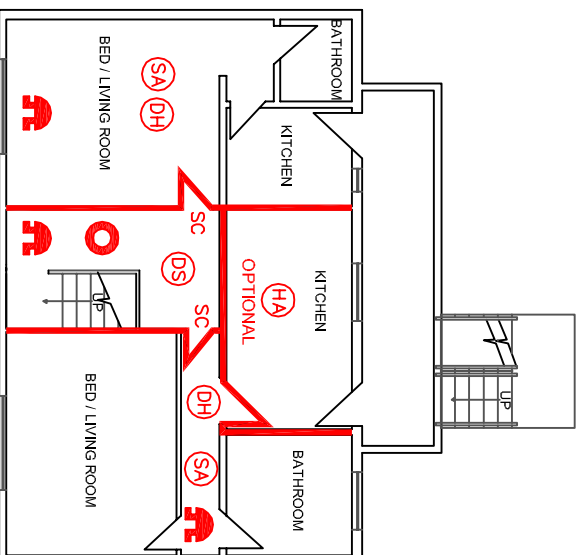
GROUND FLOOR  
 COMMERCIAL



FIRST FLOOR  
 RESIDENTIAL



SECOND FLOOR  
 RESIDENTIAL



KEY

- Control and indicator panel linked to whole house system
- Manual call point linked to whole house system
- Smoke detector linked to whole house system
- Heat detector linked to whole house system
- Sounder linked to whole house system
- Emergency lighting
- Smoke alarm with internal sounder—not linked to whole house system
- Optional heat alarm – with internal sounder not linked to whole house system
- FD30S fire door
- 30 minutes fire resistance
- 60 minutes fire resistance
- Self closing device